

# VALIANT 10,188 BHP ANCHOR HANDLING TUG SUPPLY VESSEL (DP2 / FIFI1) 120 T BOLLARD PULL



## REGISTRATION

Built	Remontowa, Poland
Classification	ABS *A1, *AMS, *DPS-2, ©, AH/Offshore Support & Towing Vessel, Fire Fighting Class 1

## DIMENSIONS

LOA	70 m
Breadth (moulded)	15.5 m
Depth (mould to sh.dk)	6.6 m
Draft (max)	5.112 m
GRT	2301
NRT	690
Deadweight @ 5.112m	2058T

## CARGO CAPACITY

Clear Deck Space	415 m <sup>2</sup> (34.6 X 12)
Deck Load	1000 T
Fuel Oil	828 Cum @100%
Potable Water	608 Cum @100%
Drill Water	656 Cum @100%
Mud	480 Cum @100%
Liquid Mud	480 m <sup>3</sup>
Drilling Fluid	990 Cum @100%
Dry bulk	190 Cum @100%

## DISCHARGE RATES

Fuel	650 GPM	@ 86PSI TDH (60 Mts)
Pot Water	1 x 150 m <sup>3</sup> /hr	@ 90 mhd
Drill Water	1 x 150 m <sup>3</sup> /hr	@ 90 mhd
Mud	1 x 150 m <sup>3</sup> /hr	@ 67 mhd
Brine	1 x 75 m <sup>3</sup> /hr	@ 90 mhd
Base Oil	1 x 150 m <sup>3</sup> /hr	@ 90 mhd
Slop Disc.	1 x 5 m <sup>3</sup> /hr	@ 45 mhd
Dry bulk	1 x 1100 m <sup>3</sup> /hr	@ 5.5 Bar

## MACHINERY

Main Engines	2 x 5,094 KW Total - 10,188 BHP
Shaft Alternators	2 x 1,724 kW
Generators	2 x 250 kW
Emergency Gen	1 x 105 kW
Bow Thrusters	2 x 800 BHP (Tunnel)
Stern Thrusters	1 x 800 BHP (Tunnel)
Rudders	2 x Fish tail high lift
Propellers	4 Bladed prop in nozzles

## SPEED & CONSUMPTION

At 5.0 M draft = 14Kts

## ACCOMMODATION TOTAL 28 PERSONS

2 x 1 berth cabins = 2  
9 x 2 berth cabins = 18  
2 x 4 berth cabins = 8  
1 X 1 hospital = 1  
All cabins fully air-conditioned

## EXTRA EQUIPMENT

Rescue Zone	Port & Stbd side
Oily Water Separator	1 m <sup>3</sup> /hr MARPOL standard.
Sewerage Treatment Plant	1 x 29 men per day.

## VESSEL MANAGEMENT DP AND JOYSTICK (ABS NOTATION DPS-2, FMEA)

L3 DP system  
2 x DP Controller  
2 x Wind Sensor  
2 x Master Gyro  
2 X DGPS  
1 X Cyscan  
Joystick for control of all the thrusters and propellers  
Powers management System  
VRS

## CRANES

1 x 2T @ 10m

## BOLLARD PULL

120 T

## TOWING AND ANCHOR HANDLING

Double Drum A/H Towing Winch, Fukushima DDWG-300H-4M Brake Holding 450 Tonnes Winch Pull	350T @ 6m/min 197T @ 10.m/min 129T @ 16.3m/min
Towing drum Capacity	1500 m X 76 mm
Anchoring Handling Capacity	1,500 m of 76 mm
Gypsies	2 x 3.25 inch (76mm Chain)
Karm Forks	2 x SWL 300 T
Towing pins	4 x SWL 160 T
Stern Roller	2.5 m Ø x 4 m SWL 500 T
Chain Lockers	2 x 80 m <sup>3</sup>
Tugger Winches	2 x 10 T

## STORAGE DRUM

Capacity 1,500 m of 76 mm

## FIREFIGHTING - FIFI CLASS 1

2 x 1,500 m<sup>3</sup> / hr @ 14 Bar  
2 x 1,200 m<sup>3</sup> / hr remote controlled Fire Monitors Throw 120 m x Height 50 m

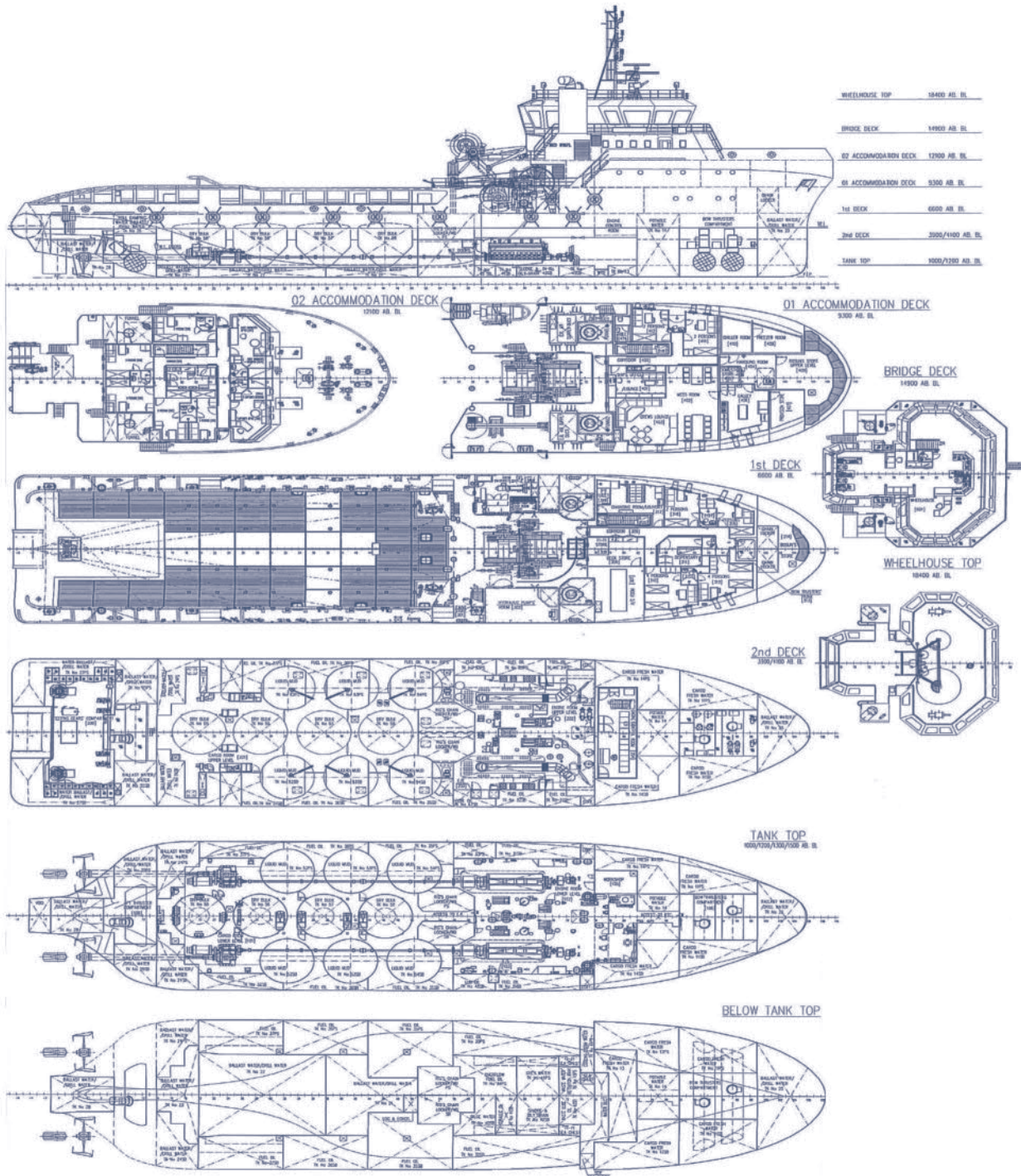
## NAVIGATION AND COMMUNICATION EQUIPMENT

SSB Radio 400 w duplex Radiotelephone MF/HF radio telephone  
Inmarsat C  
VHF radio tel C/W DSC watch-receiver  
AIS  
Navtex  
Radar Transponder - SART  
EPIRB  
Magnetic Compass  
Ship Security System  
2 x Radar X Band ARPA  
Doppler Speed Log  
GPS Navigator  
Echo Sounder  
3 x GMDSS Walkie Talkies

**VALIANT** 10,188 BHP ANCHOR HANDLING TUG SUPPLY VESSEL  
(DP2 / FIFI1) 120 T BOLLARD PULL



GENERAL ARRANGEMENT DRAWING



NOTICE: The data contained herein is provided for convenience of reference to allow users to determine the suitability of the Company's equipment. The data may vary from the current condition of equipment which can only be determined by physical inspection. Company has exercised due diligence to insure that the data contained herein is reasonably accurate. However, Company does not warrant the accuracy or completeness of the data. In no event shall Company be liable for any damages whatsoever arising out of the use or inability to use the data contained herein. Fuel consumption figures are historically conservative approximations.